

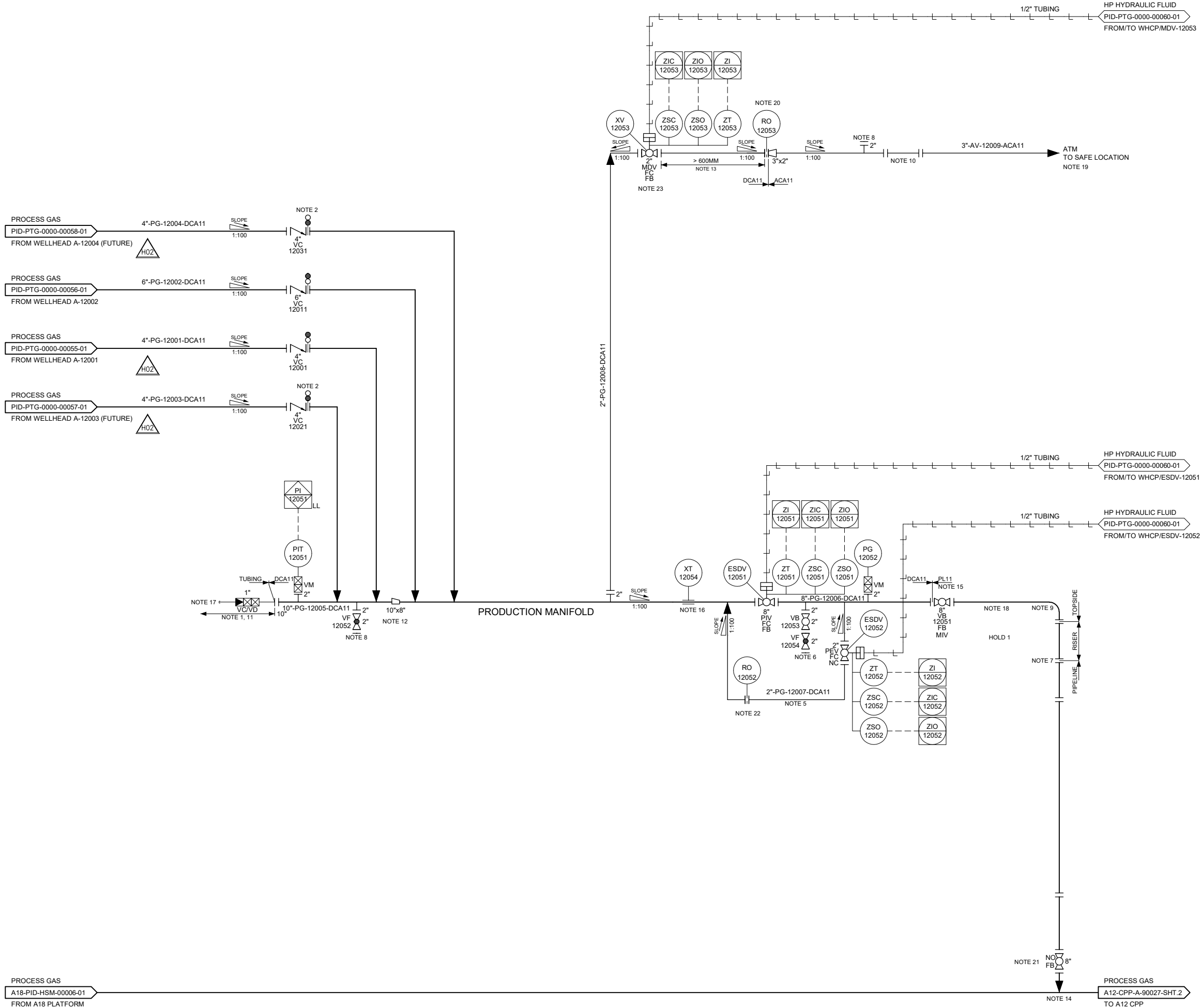


A15 & B10 DEVELOPMENT

FEED STUDY STAGE 2+

Petrogas Doc. Number: A15-0000-PRO-PID-PTG-0000-00059-01	Rev: H02 Date: 01-11-2021
<p>Doc. Title: P&ID - PRODUCTION MANIFOLD AND EXPORT PIPELINE - A15 PLATFORM</p> <p>Asset: A15</p> <p>Tag Number / Equipment Details: --</p> <p>Issue Purpose: FOR DESIGN</p> <p>Petrogas PO/Contract Number : 4100002758</p> <p>Other Reference: -</p> <p>Originator: PTG - Petrogas</p>	

Approval Status:			Signature/ Date:
1	REVIEWED NO COMMENTS	NO COMMENTS	WORK MAY PROCEED
2	REVIEWED WITH COMMENTS	FULLY INCORPORATE ALL COMMENTS AND RE-SUBMIT FOR REVIEW	WORK MAY PROCEED
3	REVISE AND RESUBMIT	FULLY INCORPORATE ALL COMMENTS AND RE-SUBMIT FOR REVIEW	WORK MAY NOT PROCEED
4	NOT REVIEWED (FOR INFORMATION ONLY)	FOR INFORMATION ONLY	WORK MAY PROCEED



GENERAL NOTES

1. THIS DOCUMENT HAS BEEN GENERATED FOR A15 AND IS ALSO APPLICABLE FOR B10. IN THE DETAIL ENGINEERING PHASE, DEDICATED DOCUMENTS FOR B10 WILL BE GENERATED.
2. A REGULAR CHECK ON OPENING AND CLOSING THE MDV (STROKE TEST) MUST BE INCORPORATED IN THE MAINTENANCE PROGRAM.

NOTES



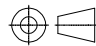
1. INSPECTION CONNECTION
2. CONNECTION FOR FUTURE WELL (SPADED)
3. DELETED
4. TOP OF LINE CONNECTION
5. EQUALIZATION LINE
6. LEAK TEST CONNECTION FOR ESDV
7. EXPORT RISER FLANGE TO BE 1500#
8. DRAIN & VENT CONNECTION FOR PIPELINE DEWATERING
9. 3D BENDS FOR DEWATERING PIGS
10. VENT EXTENSION CONNECTION TO RIG WHEN REQUIRED
11. RESERVED SPACE TO REMOVE DEWATERING PIGS
12. SUFFICIENT LENGTH IN 10" MANIFOLD TO COLLECT DEWATERING PIGS
13. MINIMUM 600MM TO PREVENT FREEZING OF MDV DUE TO JT-EFFECT
14. MECHANICAL HOT-TAP FITTING TO EXISTING A18-A12 PIPELINE
15. PIPELINE SPEC. P11 IN ACCORDANCE WITH NEN3656
16. TEMPORARY LOCAL PIG SIGNALER FOR DEWATERING PURPOSE
17. PURGE CONNECTION AFTER DEWATERING
18. FIRE PROTECTION ON THE RISER UP UNTILL AND INCLUDING PEV & PIV
19. TIP PROVIDED WITH BIRD SCREEN
20. RO-12053 IS 2mm DEPRESSURIZATION TAKES MAXIMAL 1.5HOURS
21. VALVE INCLUDES DOUBLE BLOCK & BLEED FUNCTION
22. RO-12052 IS 5mm EQUALIZING TAKES MAX 15 MINUTES
23. THERE IS A START-UP PERMISSIVE ON THE CLOSED POSITION OF THE MDV. WHEN THE VALVE IS NOT IN THE CLOSED POSITION AND THERE WILL BE AN ESD-3 WHEN DURING PRODUCTION THE MDV POSITIONER IS INADVERTENTLY NOT IN THE CLOSED POSITION (OPENED).

HOLDS

1. HOLD FOR PASSIVE FIRE PROTECTION ON RISER AND ESDV'S

ABBREVIATIONS

- MDV - MAINTENANCE DEPRESSURIZATION VALVE
PIV - PIPELINE ISOLATION VALVE
PEV - PIPELINE EQUALIZING VALVE
MIV - MANUAL ISOLATION VALVE

			10.2.e						
H02	01-11-2021	APPROVED FOR DESIGN (FEED)							
H01	26-10-2021	APPROVED FOR DESIGN (FEED)							
E02	25-08-2021	FOR COMMENTS (FEED) (HAZOP)							
E01	22-07-2021	ISSUED FOR COMMENTS (FEED)							
L01	21-02-2020	ISSUED FOR DESIGN							
Rev	Date	Description	Drawn	Eng.	Check	Appr.	Client		
<div> Jan Evertsenweg 12 3115 JA Schiedam The Netherlands +31(0) 103132100 info@enersea.nl</div>			Client Petrogas Transportation B.V.						
<div></div>			Project Stage 2+ Project - A15 & B10 Development						
			Document Phase 3 - A15 Platform Piping & Instrumentation Diagram Production Manifold and Export Pipeline						
					Scale: N.T.S. Size: A1				
Project Number 19025		Client Document Number A15-0000-PRO-PID-PTG-0000-00059-01							